

O2 REMOTE USER AND OWNER MANUAL



INDICATIONS FOR USE:

The O2 Remote Oxygen Tube reel is intended for use by anyone who is required or prescribed by a qualified medical professional to use supplemental oxygen. The device is designed to be used with all standard oxygen tubing with the general outside dimensions of .375 inches. Please carefully read and follow all instructions in the accompanying User Manual and Owner Manual before using.

For tutorial videos on setting up and using go to
www.oxygenmgmtsystems.com/tutorials

The O2Remote is made in the USA by

Oxygen Management Systems, LLC

11931 S 87th E Ave

Bixby, OK 74008

918-943-3513

USER MANUAL

1.

Disconnect main supply oxygen tube and place container in front of concentrator.



DO NOT COVER AIR INTAKE VENTS!

2.

Attach swivel coupler to one end of 7ft clear tube. Attach other end back to concentrator (or water bottle if one is used)



3.

Connect main supply tube to swivel connector and clear tube.



4.

Secure the container to the concentrator using the Velcro strap



5.

Attach swivel clip to a SHORT side of container



6.

Place swivel coupler in swivel clip. Make sure it looks EXACTLY like picture!



7.

Insert the power supply to the socket on back of unit



8.

Place main unit on opposite side from swivel clip and open lid



9.

Make sure the middle tab is on outside of container as pictured



10.

Pivot the small roller away from large roller and place tube between the rollers and close lid



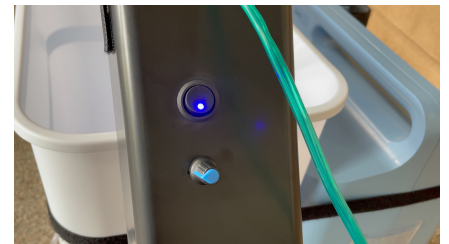
11.

Attach flap to top of lid and let it rest on the edges of container



12.

Push power button and the blue LED will light up



13.

Final set-up should look very close to this



14.

Rotate speed dial clockwise to increase speed



OPERATING YOUR O₂REMOTE: push the power switch to turn on power. Push either "IN" or "OUT" on the remote to operate. Turn speed dial to adjust speed.

ALWAYS BE AWARE OF THE POSSIBILITY YOUR TUBING MAY STILL KINK. VISUALLY INSPECT YOUR TUBING IN THE CONTAINER REGULARLY AND ESPECIALLY AT NIGHT BEFORE GOING TO BED TO ENSURE YOUR TUBING IS NOT KINKED OR PINCHED.

INCLUDED ITEMS WITH O2REMOTE



TIPS AND TRICKS

TUBING MANAGEMENT:

- On initial set-up and when using new tubing, load the device as directed and then retract and release the entire length of tubing 5 or 6 times. This will cause the tubing to relax and straighten. During this time, expect the tubing to twist and kink until it relaxes by going through the rollers several times.
- If the tubing becomes stuck while dispensing, push the “IN” button for a second to back the tubing up. Then push the “OUT” button.
- **Throughout the day as you use your device, make sure to intentionally dispense the ENTIRE length of tubing at least 2 or 3 times a day – this will keep your tubing free of twists. Failure to do this may cause problems!**

Containers:

- use 13 gallon kitchen type containers, or 10 gallon office trash cans. You can go to uline.com and search for “10 gallon office trash can” or walmart.com and search for “13 gallon swing lid trash can”. Containers that are close to 20 inches tall work best.

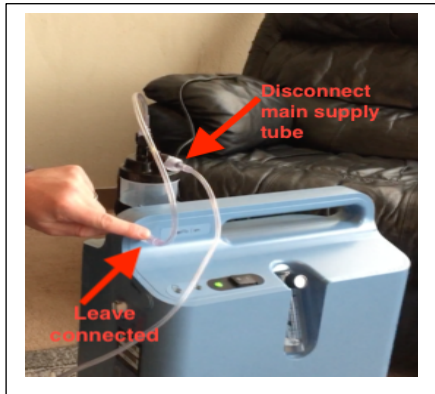
BATTERIES:

- eventually, you will need to change the battery in your remote control with **two (2) CR2016** type ‘coin cell’ batteries

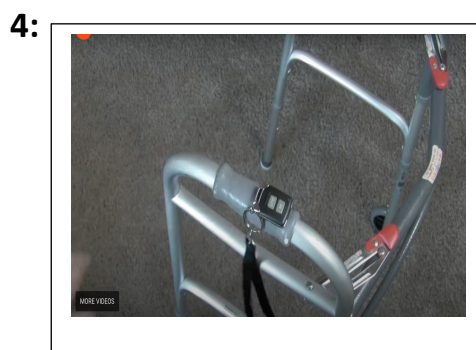
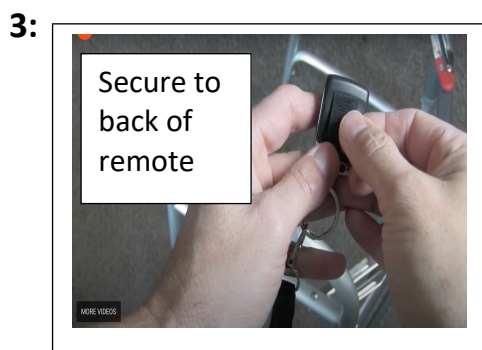
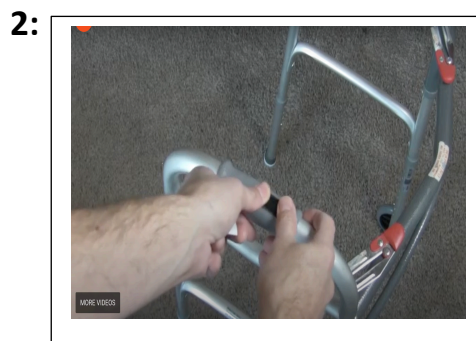
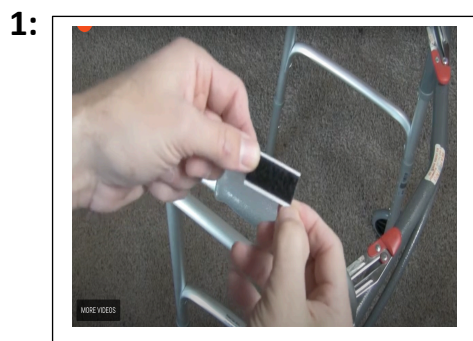
SPECIAL SITUATIONS

Water Bottles:

If your concentrator has a water bottle as part of your set-up, then leave the short tube that connects your concentrator and the water bottle connected. Simply disconnect the main supply tube from water bottle and follow instructions in step one. Refer to following picture for reference:



WALKERS: apply adhesive Velcro strips to the back of the remote and to a handle of your walker under your dominant thumb.



Owner's Manual

IMPORTANT: READ CAREFULLY BEFORE USE

For assistance, please call Customer Service at 918-943-3513

Monday – Friday 8:00am – 5:00pm

For more information please visit our website at **o2remote.com**

US PATENT 11008195

EU PATENT PENDING

IMPORTANT SAFETY INSTRUCTIONS

Basic precautions should always be followed when using an electrical appliance, including the following.

SAVE THESE INSTRUCTIONS!

WARNING: TO REDUCE THE RISK OF FIRE, ELECTRIC SHOCK OR INJURY:

- Do not use outdoors or on wet surfaces
- Do not allow to be used as a toy. Not intended for use by children age 12 and under. Close supervision is necessary when used near children. To avoid injury or damage keep children away from product, and do not allow children to place fingers or other objects into any openings.
- Use only as described in this manual. Use only manufacturer's attachments and charger.
- Do not use with damaged cord or plug. If device is not working as it should, has been dropped, damaged, left outdoors, or dropped into water, contact **OMS** prior to continuing use.
- Do not handle charger plug or device with wet hands.
- Do not put any foreign object into openings other than oxygen tubing.
- Keep hair, loose clothing, fingers and all parts of the body away from openings and moving parts.
- Follow basic guidelines for oxygen safety and fire safety when using oxygen and oxygen devices.

OTHER IMPORTANT TERMS

IN NO EVENT WILL **OMS, LLC** BE LIABLE FOR ANY SPECIAL, INDIRECT, INCIDENTAL OR CONSEQUENTIAL DAMAGES OF ANY KIND OR NATURE TO OWNER OR ANY PARTY CLAIMING THROUGH OWNER, WHETHER BASED IN CONTRACT, NEGLIGENCE, TORT OR STRICT PRODUCTS LIABILITY OR ARISING FROM ANY CAUSE WHATSOEVER.

WARNING! OXYGEN TUBING IS A FALL HAZARD. USE OF THIS DEVICE DOES NOT GUARANTEE USER WILL NOT FALL. **OMS, LLC** IS NOT RESPONSIBLE FOR ANY FALL, INJURY OR DEATH RESULTING FROM OXYGEN TUBE ENTANGLEMENT OR ENTRAPMENT WHILE USING THIS DEVICE.

WARNING! Failure to be aware of and manually undo kinks may lead to decreased oxygenation, respiratory distress, or death. If user is unable to recognize and manually undo kinks due to hand deformity, physical handicap, cognitive impairment, or sensory deficits such as vision loss, or any other reason, do not use this device.

LIABILITY RELEASE

By choosing to use this device, user agrees to release **OMS, LLC** from all liability relating to injuries that may occur to user or any party claiming through user. By choosing to use this device, user agrees to hold **OMS, LLC** entirely free from any liability, including financial responsibility for injuries incurred while using this device. User acknowledges the risks involved in using the **O₂Remote**. Risks to user have been made clear in this manual.

LIMITED 3 YEAR WARRANTY

WHAT THIS WARRANTY COVERS

When used and maintained in normal household use and in accordance with the Owner's Manual, your **O₂Remote** device is warranted against original defects in material and workmanship for a full 3 year period from date of customer purchase. During the Warranty Period, **O₂MS, LLC** or an authorized agent will provide labor and parts, at no cost to you, to correct any such defect in product purchased in the United States. User will be responsible for all shipping costs.

HOW TO MAKE A WARRANTY CLAIM

If this product is not as warranted, call **918-943-3513** and notify Customer Service for repair and replacement options.

WHAT THIS WARRANTY DOES NOT COVER

This Warranty does not cover improper maintenance of the product, damage due to misuse, acts of God, nature, vandalism or other acts beyond the control of **O₂MS, LLC**, owner's acts or omissions, use outside the country in which the product was initially purchased. This warranty does not cover pick up, delivery, transportation or house calls. The Warranty period will not be extended by any replacement or repair performed under this warranty.

This device complies with part 15 of the FCC Rules. Operation is subject to the following two conditions: (1) This device may not cause harmful interference, and (2) this device must accept any interference received, including interference that may cause undesired operation.

This equipment has been tested and found to comply with the limits for a Class B digital device, pursuant to part 15 of the FCC Rules. These limits are designed to provide reasonable protection against harmful interference in a residential installation. This equipment generates uses and can radiate radio frequency energy and if not installed correctly may cause harmful interference to radio communications. If this equipment does cause harmful interference to radio or television reception, try one of the following: move the antenna; increase distance between equipment and receiver; connect the equipment into an outlet on a different circuit than the receiver; or consult the dealer or experienced technician for help.



Oxygen Management Systems, LLC
11931 S 87th E Ave
Bixby, OK 74008
www.o2remote.com